

- ✓ **BARNs**
- ✓ **STORAGE**
- ✓ **CARPORTS**
- ✓ **GARAGES**
- ✓ **INDUSTRIAL**
- ✓ **COMMERCIAL**
- ✓ **BARNDOMINIUMS**



SETTING THE STANDARD

IN CUSTOM METAL BUILDING DESIGN



atmetalbuildings.com



501-825-5005



5185 Heber Springs Rd
Quitman, AR 72131

CARPORTS

STANDARD SPECIFICATIONS:

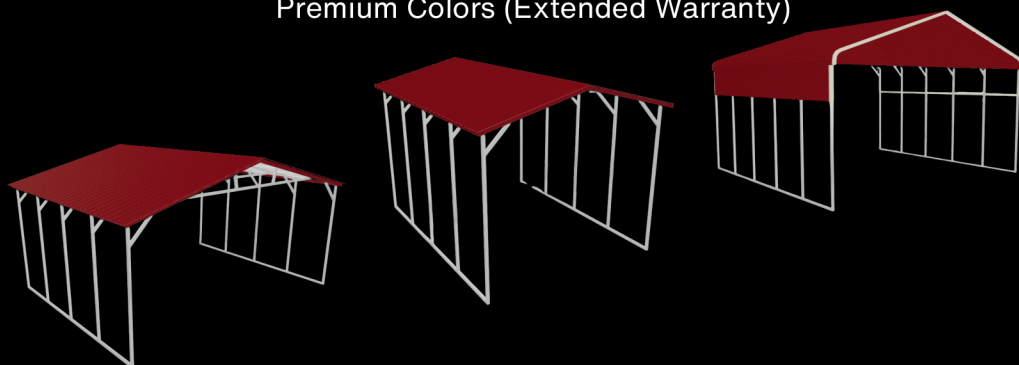
- From 12' to 40' wide
- Any length
- From 6' to 16' side height
- 14-gauge steel framing
- 29-gauge metal roof panels

Includes Frame & Roof Only

COLOR MATCHING SCREWS INCLUDED!

CARPORT MATERIAL UPGRADES & OPTIONS

12-gauge Steel Framing
26-Gauge Metal Panels
Gables
J-Trim
Premium Colors (Extended Warranty)



CARPORTS WITH STORAGE

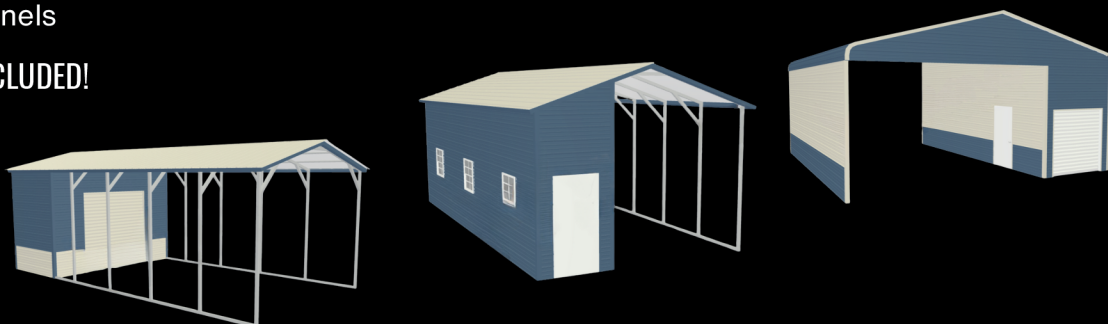
STANDARD SPECIFICATIONS:

- From 6' to 16' side height
- 14-gauge steel framing
- 29-gauge metal roof panels

COLOR MATCHING SCREWS INCLUDED!

CARPORT WITH STORAGE UPGRADES & OPTIONS

12-gauge Steel Framing
26-Gauge Metal Panels
Gables
J-Trim
Premium Colors (Extended Warranty)



RV COVERS

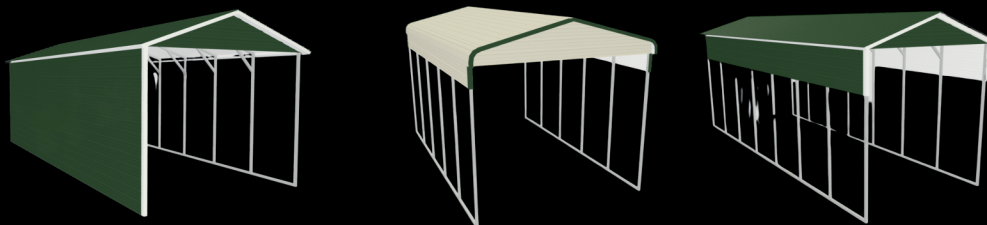
STANDARD SPECIFICATIONS:

- From 12' to 40' wide
- Any length
- Up to 16' side height
- 14-gauge steel framing
- 29-gauge metal roof panels

COLOR MATCHING SCREWS INCLUDED!

RV COVER MATERIAL UPGRADES & OPTIONS

Front Gable
2 Panels on Each Side
Taller Side Height & Extended Gable in Back
12-Gauge Steel Framing
26-Gauge Metal Panels
Gables & J-Trim
Premium Colors (Extended Warranty)



GARAGES

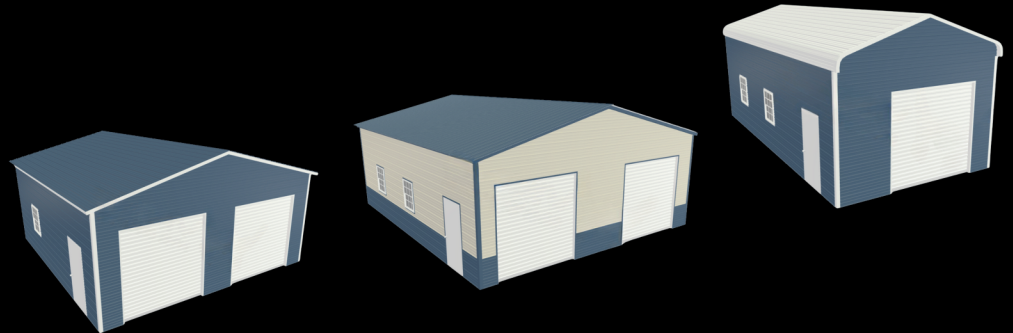
STANDARD SPECIFICATIONS:

- From 12' to 40' wide
- Any length
- Minimum 8' side height for regular roof, minimum 9' side height for boxed eave and vertical roof
- 14-gauge steel framing
- 29-gauge metal roof panels

COLOR MATCHING SCREWS INCLUDED!

GARAGE MATERIAL UPGRADES & OPTIONS

12-gauge Steel Framing
26-Gauge Metal Panels
Variety of Garage Door Sizes
Windows and Walk-in Doors
Premium Colors (Extended Warranty)



BARN

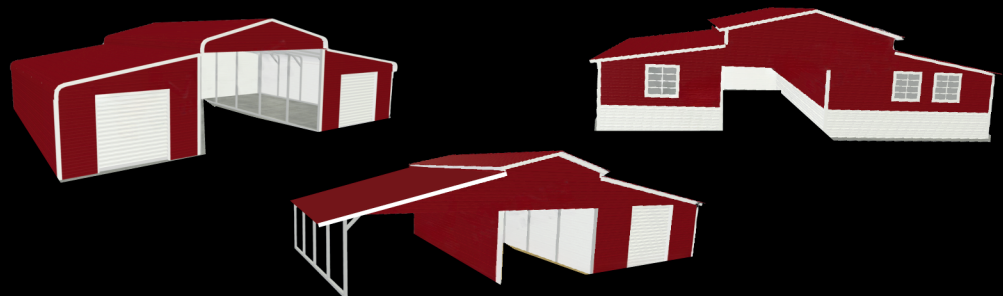
STANDARD SPECIFICATIONS:

- Up to 60' wide
- Any length
- Center structure side heights from 9' to 16'
- Lean-to side heights from 6' to 16'
- 14-gauge steel framing

COLOR MATCHING SCREWS INCLUDED!

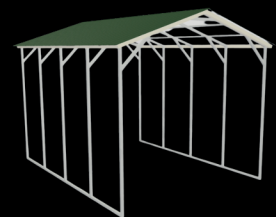
BARN MATERIAL UPGRADES & OPTIONS

12-gauge Steel Framing
26-Gauge Metal Panels
Enclosed Sides and or Ends
Garage & Walk-in Doors
Windows & Frame outs
Premium Colors (Extended Warranty)

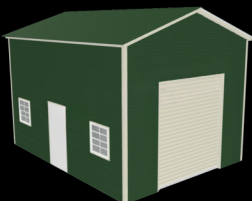


DREAM BIG - BUILD SMART

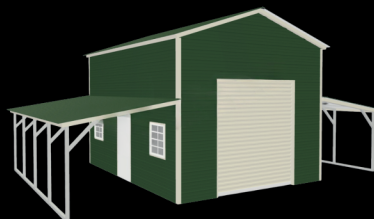
We offer flexible, budget-friendly solutions that allow you to start small and expand as your needs grow. Start with the essentials and add features over time—no stress, no rush. Gradually enhance your space to match your vision! Let's build it, step by step.



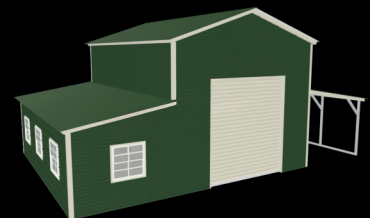
START SIMPLE



ENCLOSE YOUR SPACE



ADD LEAN-TOS



ENCLOSE LEAN-TOS, SIDES & ENDS

COLOR OPTIONS TO MATCH ANY VISION

20-YEAR LIMITED WARRANTY ON RUST THROUGH OF THE METAL PANELS
(assuming normal user care and maintenance)



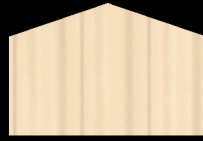
Arctic White



Polar White



Bone White



Ivory



Light Stone



Saddle Tan



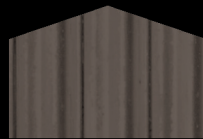
Desert Sand



Taupe



Buckskin



Burnished Slate



Antique Bronze



Light Brown



Koko Brown



Brown



Black



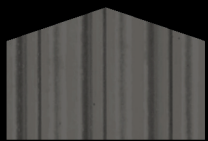
Ash Gray



Old Town Gray



Charcoal Gray



Charcoal Gray II



Charcoal Blue



Rustic Red



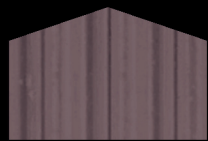
Rural Red



Dark Red



Crimson Red



Berry



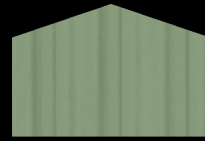
Evergreen



Ivy Green



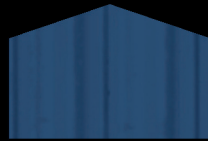
Fern Green



Colony Green



Hawaiian Blue

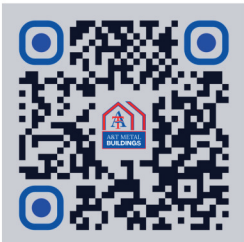


Gallery Blue



Matte Black

Bring Your Vision To Life!



Visit atmetalbuildings.com or use a tablet to scan the QR code to the left to check out our 3D Configurator tool. It can help you design the building of your dreams and obtain a price directly from your nearest dealer!



INDUSTRIAL/COLD FORM

Strength, Durability, and Affordability

Cold-formed commercial metal buildings deliver the perfect solution. With the strength of steel and the versatility to fit any commercial need, these buildings are designed for reliability, flexibility, and long-term value.

Cold-formed steel offers a cost-effective alternative to traditional construction, allowing faster build times and reduced labor costs. From retail spaces to warehouses, offices to industrial facilities, our metal buildings are engineered to withstand the elements while providing a sleek, modern look that works for your business.

- Cost-Effective- Save money on materials and construction with a quicker build time.
- Durability- Cold-formed steel is corrosion-resistant, ensuring your building stands strong year after year.
- Customizable- Tailored to your specific needs with various designs, sizes, and features.
- Energy Efficient- Insulated options help reduce heating and cooling costs, making your building more sustainable.

- Shorter Lead Times
- Quicker Installation
- Reduced Onsite Fabrication
- 20-25% Less Concrete
- No Pre-Set Anchor Bolts



RED IRON/COMMERCIAL

Red iron buildings are structures constructed using industrial-grade steel I-beams, known for their distinctive red iron oxide coating. This coating not only imparts a reddish hue but also provides enhanced resistance to corrosion, ensuring durability and longevity.

STANDARD SPECIFICATIONS:

- Use of Steel I-beams to provide exceptional strength
- Red Iron Oxide Coating enhances resistance to rust & corrosion extending the building's lifespan
- Ability to support wider spans, offering expansive, unobstructed interiors, making them ideal for warehouses, manufacturing facilities, and large commercial spaces.

- Structural Integrity
- Durability
- Cost-Effective
- Eco-Friendly & Sustainable
- Completely Customizable

Red iron buildings are highly customizable, with sizes tailored to specific needs. For instance, a 30×60 red iron metal building offers 1,800 square feet of usable space, while a 60×100 structure provides 6,000 square feet.



SETTING THE STANDARD IN CUSTOM METAL BUILDING DESIGN



We know that creating your ideal space doesn't happen overnight, and it doesn't have to break the bank. We offer flexible, budget-friendly solutions that allow you to start small and expand as your needs grow.

Whether you're opening a new business, expanding your current space, or simply upgrading, we'll work with you to create a design that fits your budget today, while laying the foundation for your dream space tomorrow.

FINANCING

- Soft credit pull until offer accepted
- Commercial and residential locations acceptable
- Flexible terms & quick access
- Not necessary to own or reside on property
- No prepayment or cancellation fees
- Simple application process
- Turns large projects into affordable monthly payments
- No impact on credit to see if customers qualify
- Terms may vary with lender

RENT TO OWN



- No Credit Check
- 90 Days Same As Cash
- 26, 48, 60 or 72 Monthly Payments Options
- Low Security Deposit
- Low Monthly Payments
- Maximum Rent to Own Price is \$25,000
- No prepayment or cancellation fees

WARRANTY

90 DAY WORKMANSHIP WARRANTY

on all buildings, effective day of installation

20 YEAR LIMITED WARRANTY

on rust through of metal panels and steel tubing assuming normal user care and maintenance.

LAND/CONCRETE MUST BE LEVEL

Concrete must be level and square, corner to corner. Return trip fees will be applied if building cannot be installed. See dealer for possible labor changes.

- A&T Buildings is not responsible for leaks under base rails.
- Interior walls extend up to but not around overhead trusses.
- Price includes basic labor. See your local authorized dealer for details.
- Buildings up to 12' tall require 2' level and clear working space around the perimeter of building. Buildings 13' or taller require 4' level and clear working space around perimeter of building.

LIFTS ARE REQUIRED FOR

- A building that is 26' or wider AND 13' or taller or
- A building that is 15' or 16' tall or
- A building that is 32' and wider or
- A building with side headers AND is 13' or taller.
- MATERIAL LIFTS are required for garage doors 12' X 12' and 12' X 14'.
- The customer is responsible for providing the lift and must have it onsite upon the installer's arrival. All lifts must be approved by A&T Metal Buildings, LLC. For questions regarding lifts, please call your local dealer.